

The background of the entire page is a painting. It depicts a large, bright, yellowish-white sun or moon in the center, surrounded by a soft, hazy glow. The sky is a deep blue. At the bottom of the image, there are dark green, leafy plants or grasses. The overall style is impressionistic and painterly.

Phenomena

A Senior Thesis Exhibition by
Catherine Grace Holland

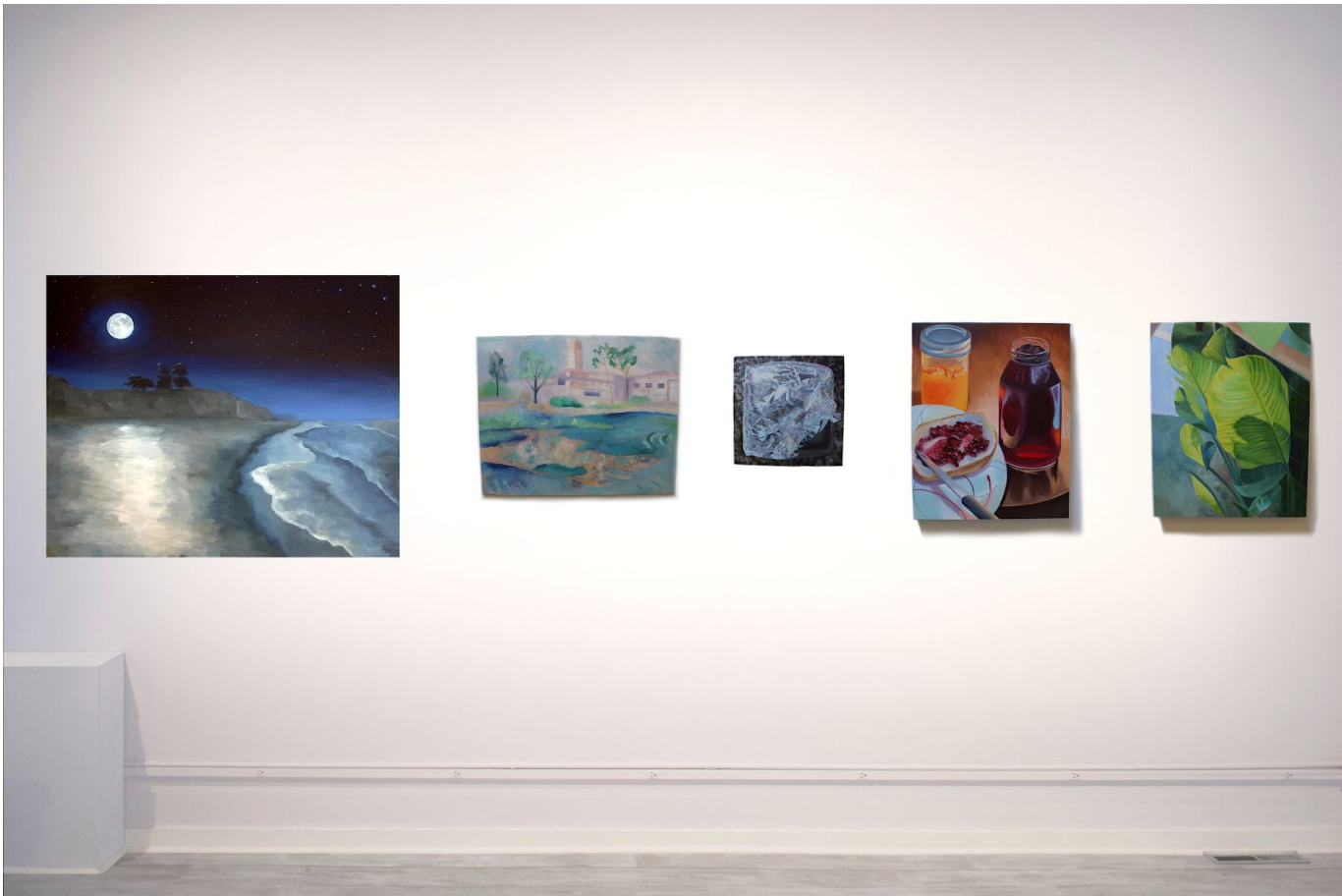
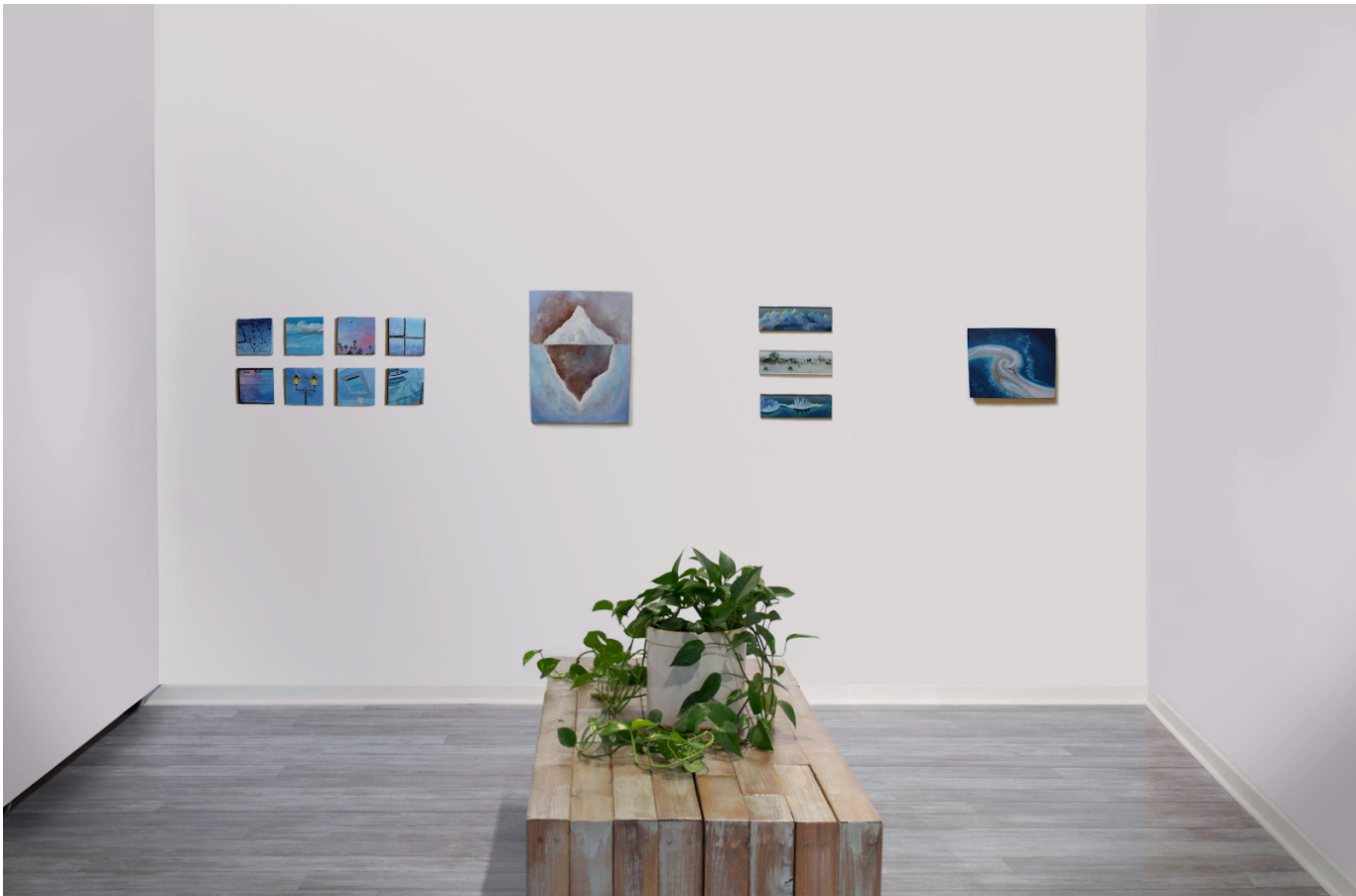
Artist Statement

My art is driven by an interest in perception and psychological responses to visual stimuli. I use paint to capture fleeting moments and ephemeral subject matters, such as light, water and smoke. Through color, rendering and composition I manipulate these images to emphasize visual phenomena, which often pushes the painting into surreal or dreamlike territory. Through my work I aim to provide an opportunity for self-reflection and a reminder that everything is worthy of a close look.

I am inspired by paintings, songs, and stories created to help us better understand ourselves and our world. This led to a series of paintings inspired by the many myths that link the forces of water with the feminine. *Unspoken*, *Wistful*, and *Elation* focus on the relationship between women and the ocean. The works of Catherine Murphy, Mary Pratt, and Gerhard Richter also inspire me. I relate to their impulse to record charged moments in a manner that moves the viewer. *Jelly and Jam*, *Baking Tin* and *Puddle* focus on reframing ordinary moments in a stimulating way. While creating these paintings, I am searching for the fine line between the beauty within reality and within the physicality of paint. For me, trying to find this point means making decisions when to leave areas loose, gestural or abstracted and when to render it close to how I see it in the world. I am interested in abstract elements that occur during the translation of an image. Both the physicality of the paint and the ability of the human hand change the representation into various levels of abstraction. I see this distortion as a metaphor for how our minds interpret and warp imagery.

I am also influenced by the work of other artists who explored the psyche, such as Remedios Varo, Agnes Pelton and Georgia O'Keeffe. Their paintings function as windows to the subconscious, expressing what cannot be said in words. I look to them when I paint abstract subject matters, such as a specific quality of light or an emotional response. This can be seen in my works *Effervescence*, *Euphotic Zone*, and *Eclipse*. The result is a depiction of intangible subjects on a material surface.









Jelly and Jam, Oil Paint on Panel, 20" x 16"







Baking Tin, Oil Paint on Panel, 12" x 12"





Puddle, Oil Paint on Panel, 8" x 10"

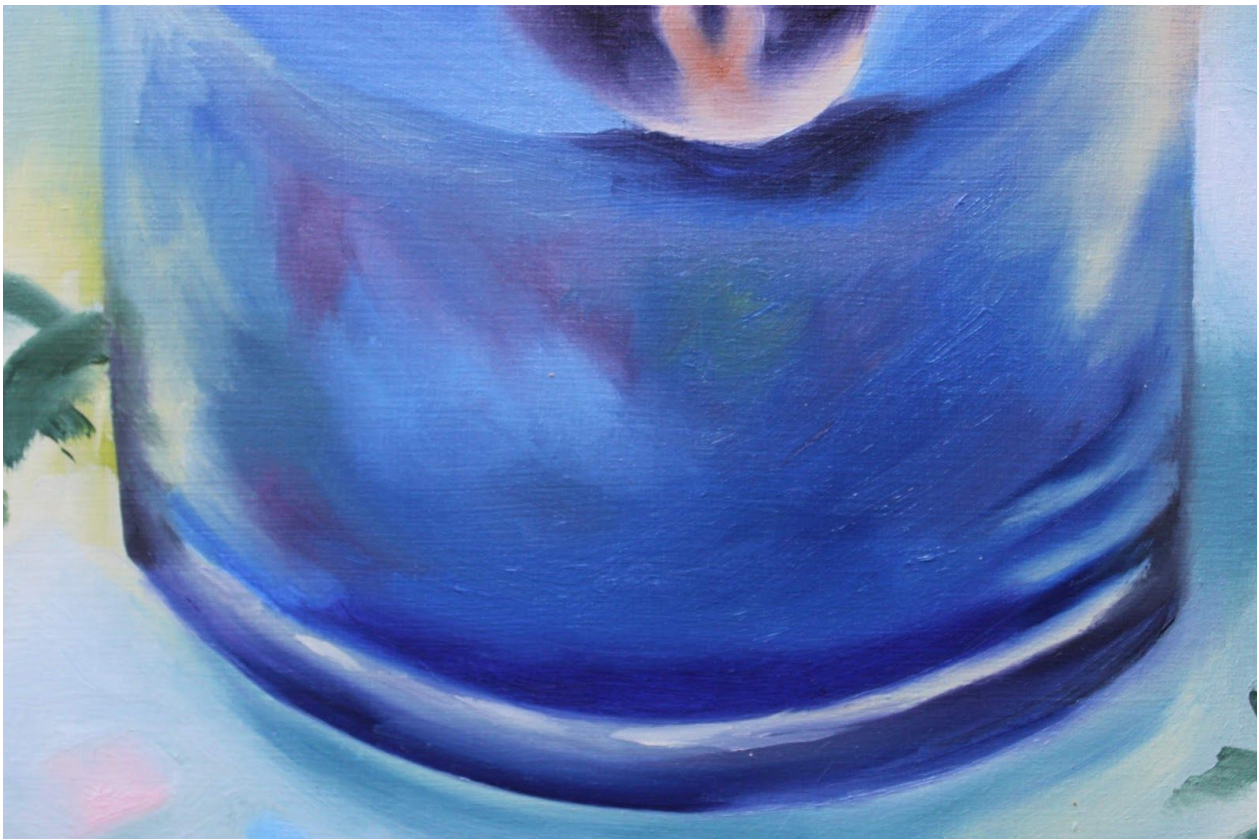




Clouds, Oil Paint on Panel, 7 ¾ x 6"



Candle, Oil Paint on Panel, 8 ½" x 7"

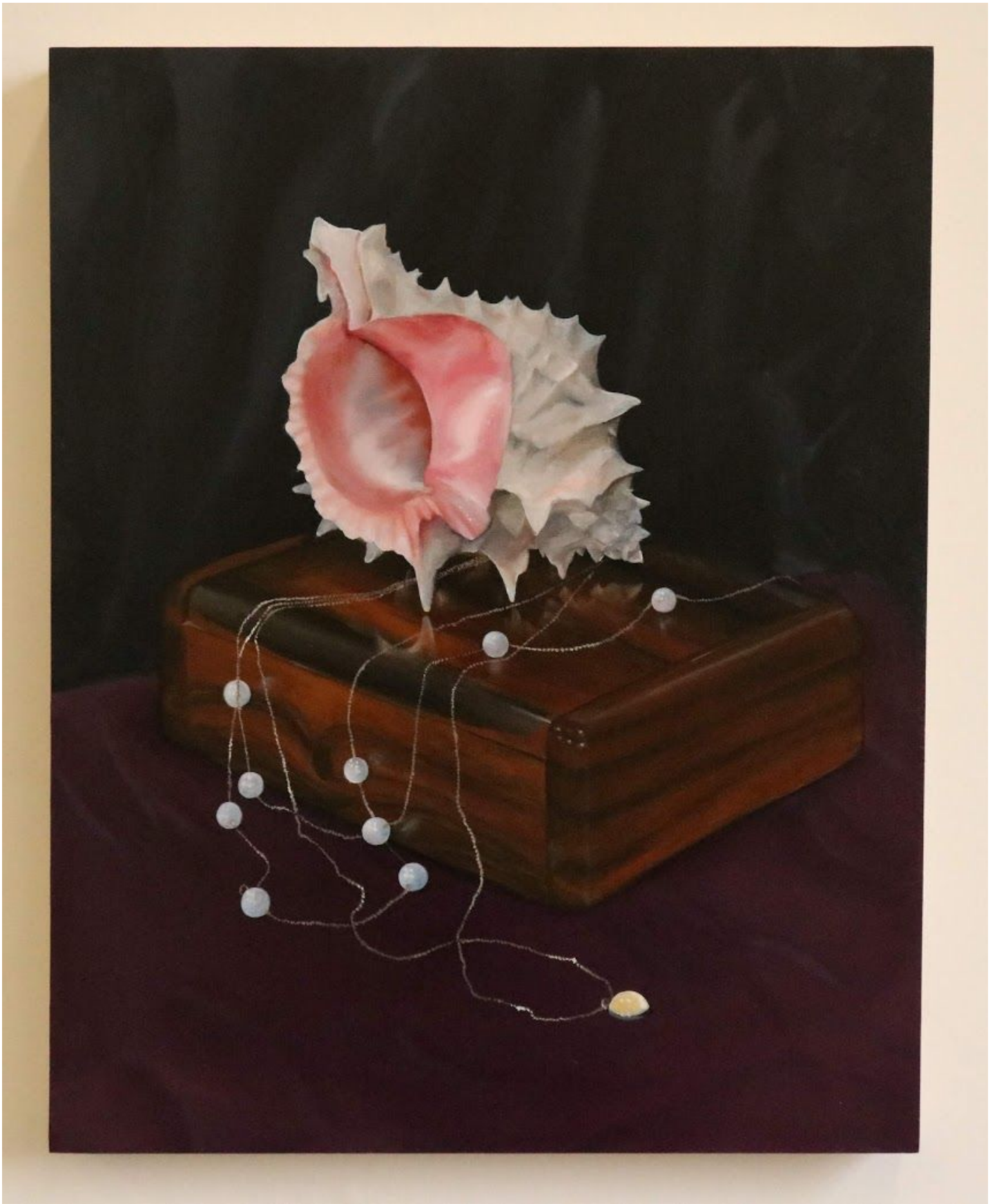




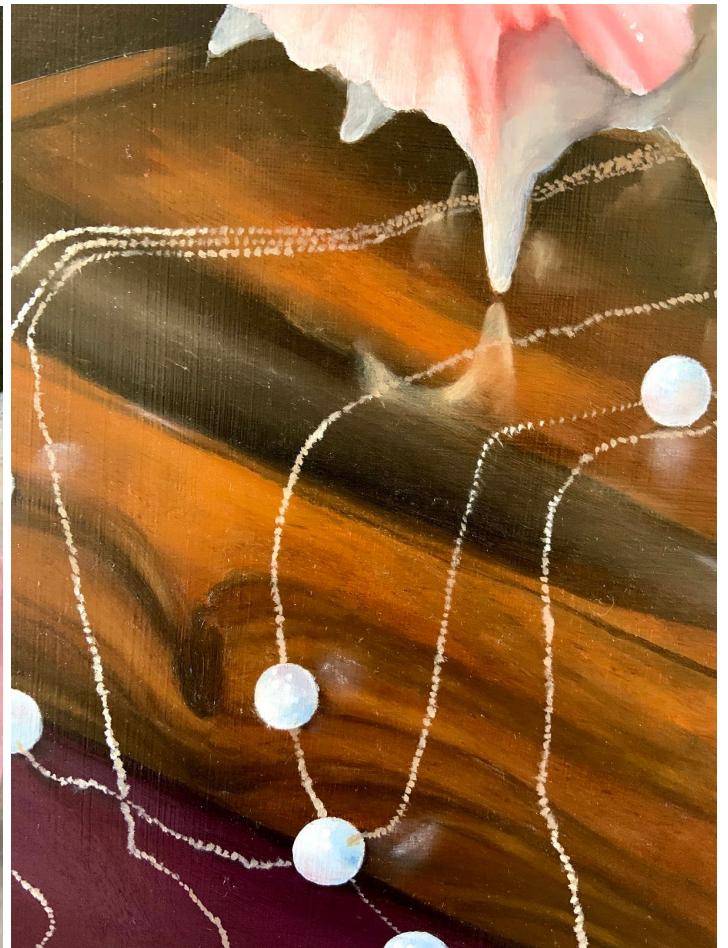
Night Light, Oil Paint on Panel, 7" x 8"



Blue Swirl, Oil Paint on Panel, 8" x 10"



The Jewelry Box of Venus, Oil Paint on Panel, 20" x 16"





Unspoken, Oil Paint on Panel, 16" x 20"





Wistful, Oil Paint on Panel, 17" x 20"



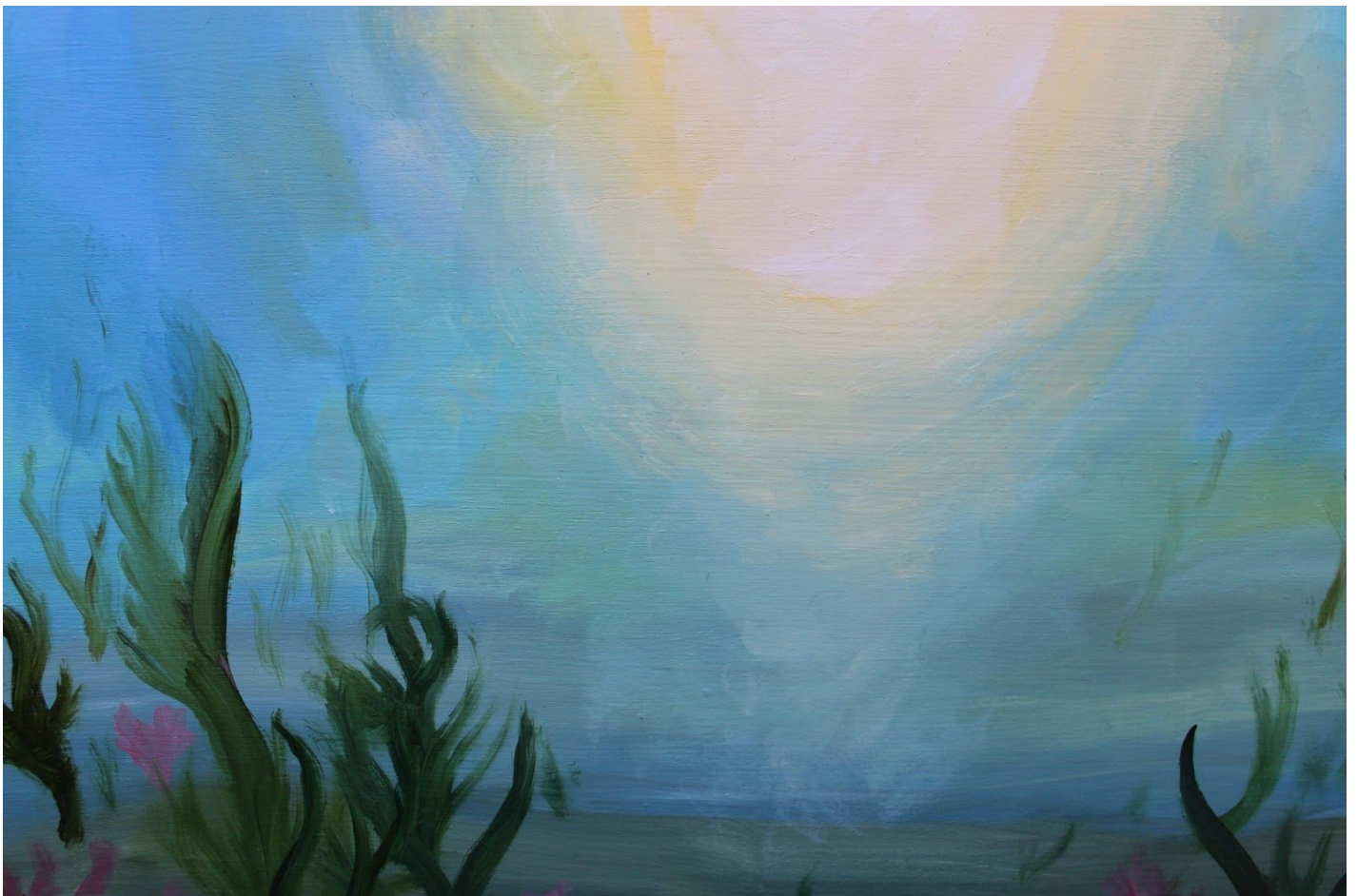
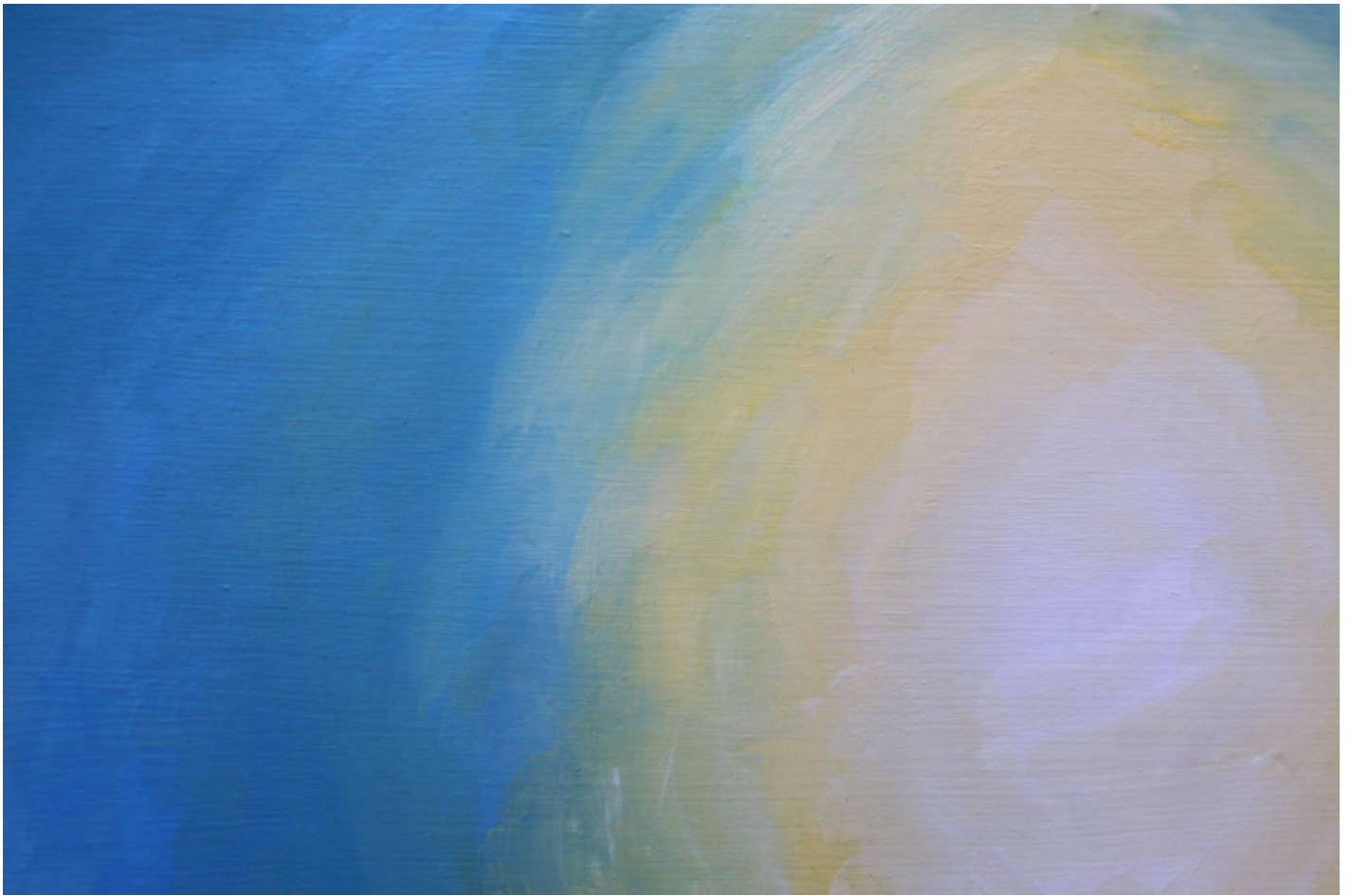


Elation, Oil Paint on Panel, 16" x 20"





Euphotic Zone, Oil Paint on Panel, 20" x 16"



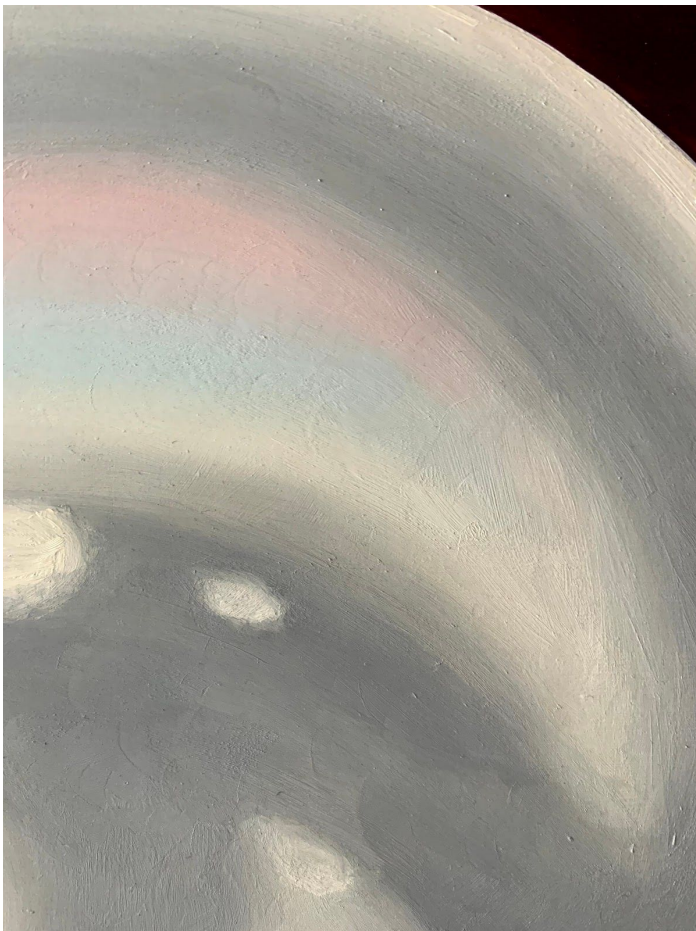


Effervescence, Oil Paint on Panel, 20" x 16"



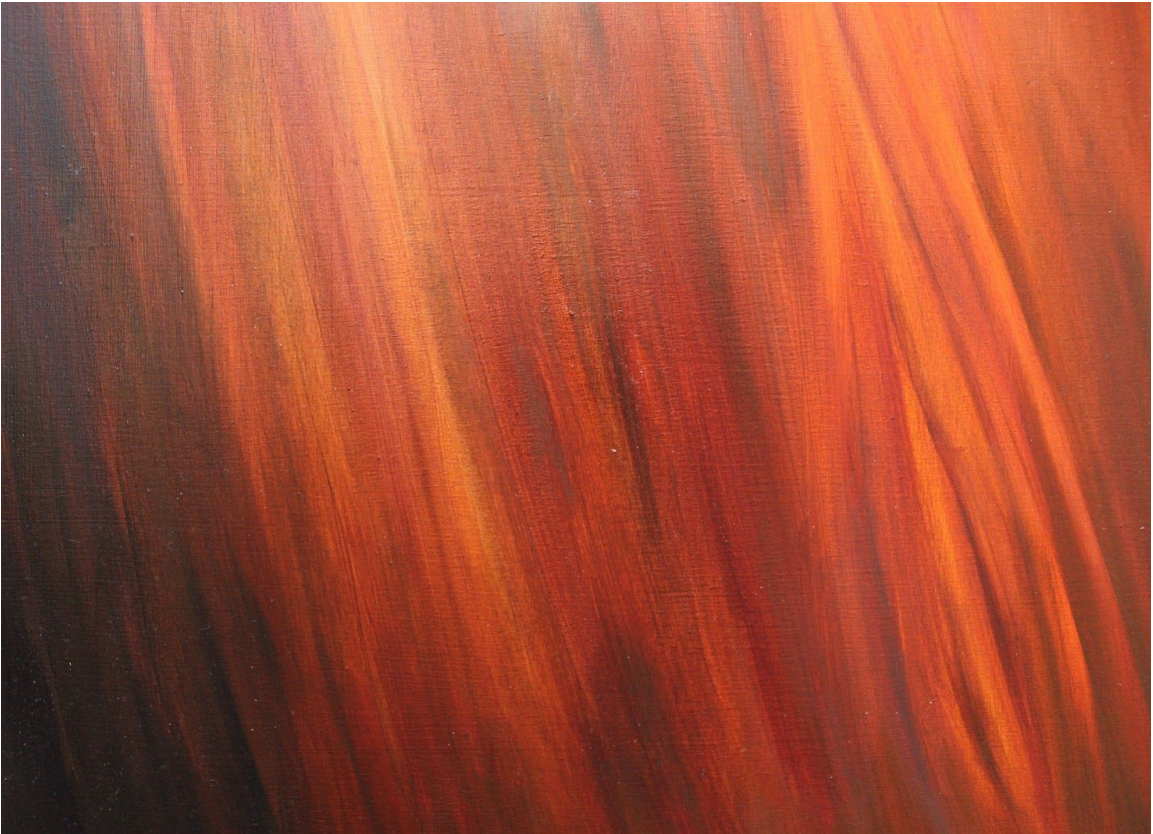


Pearls, Oil Paint on Panel, 20" x 16"



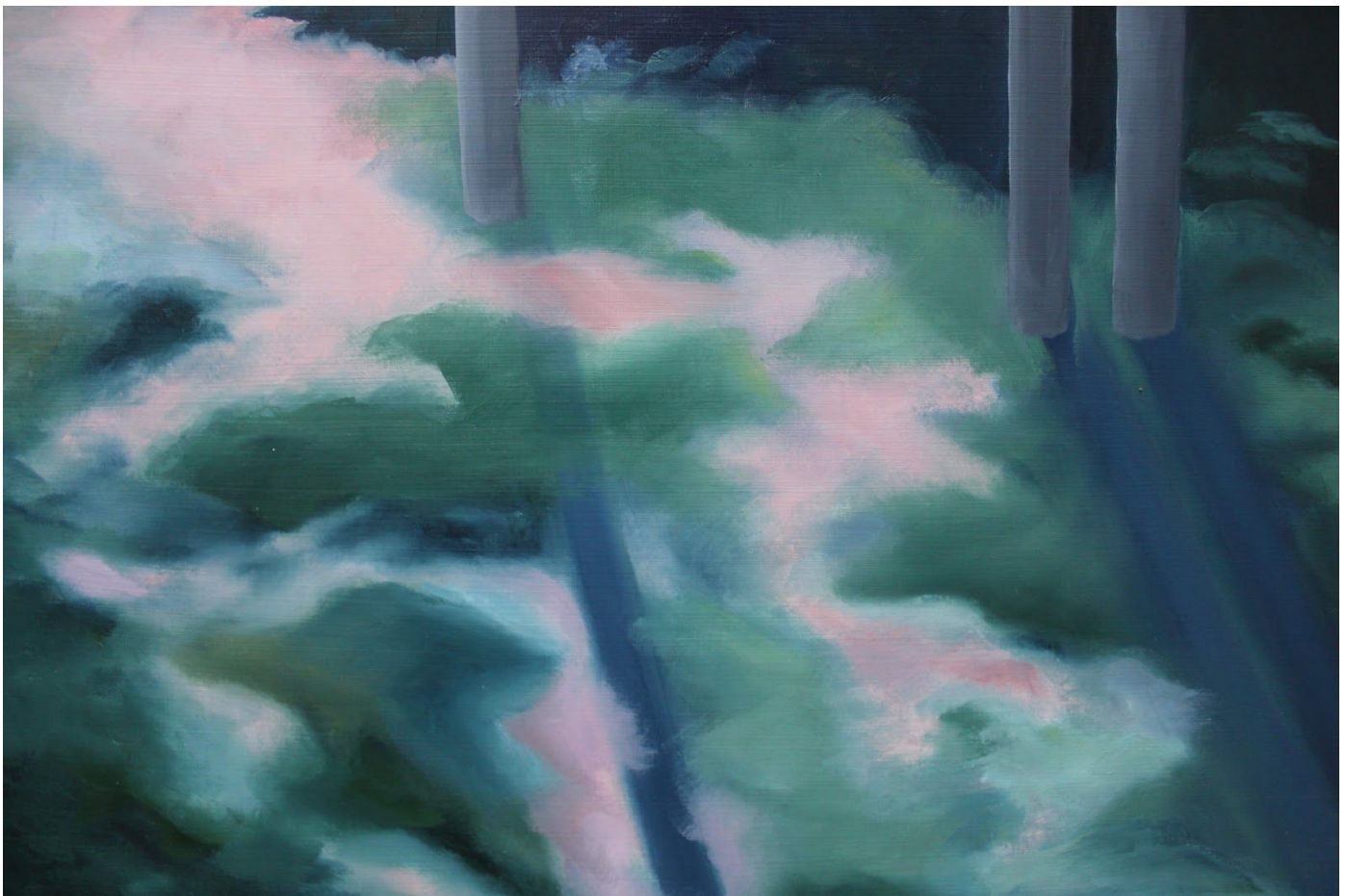


Beacon, Oil Paint on Panel, 20" x 16"



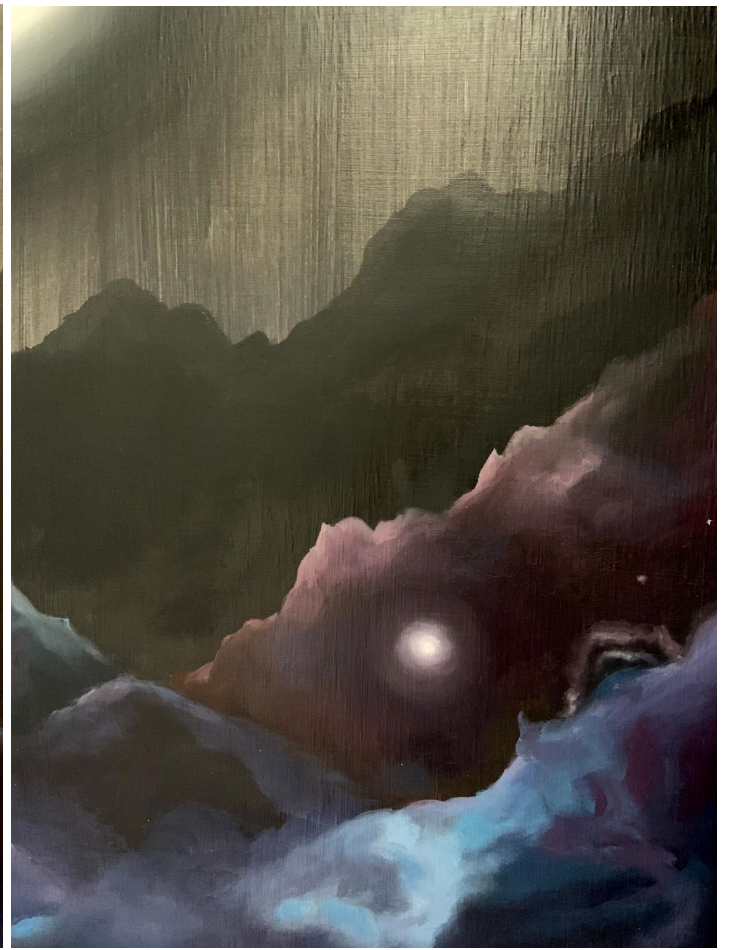


Gateway, Oil Paint on Panel, 20" x 16"





Eclipse, Acrylic and Oil Paint on Panel, 20" x 16"





Overshadowing, Acrylic Paint on Panel, 6" x 6"



Occultation, Acrylic on Panel, 8 1/2" x 7"



Unseen, Oil Paint on Panel, 16" x 12"





Snowscapes, Acrylic and Oil Paint on Glass Tiles, each 3" x 9"





Sky Series, Acrylic and Oil Paint on Vinyl, each 4" x 4"

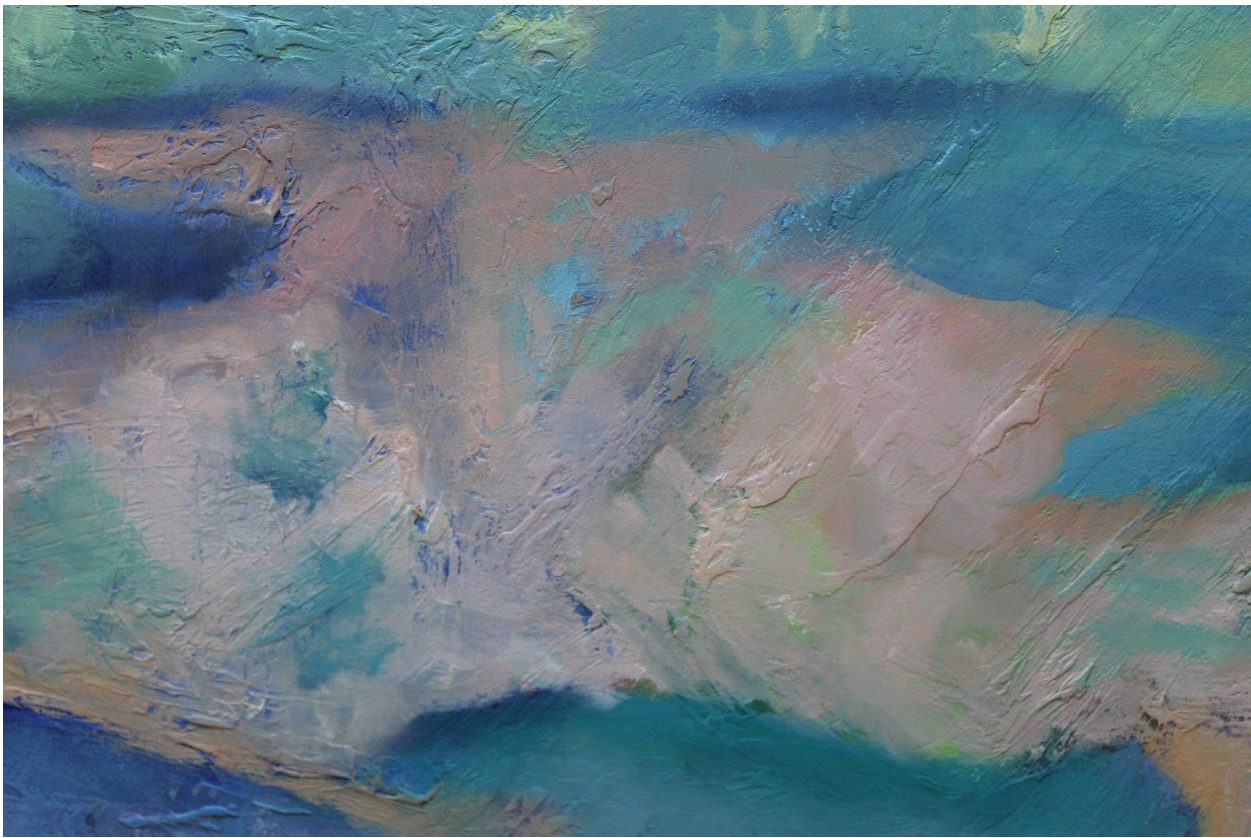






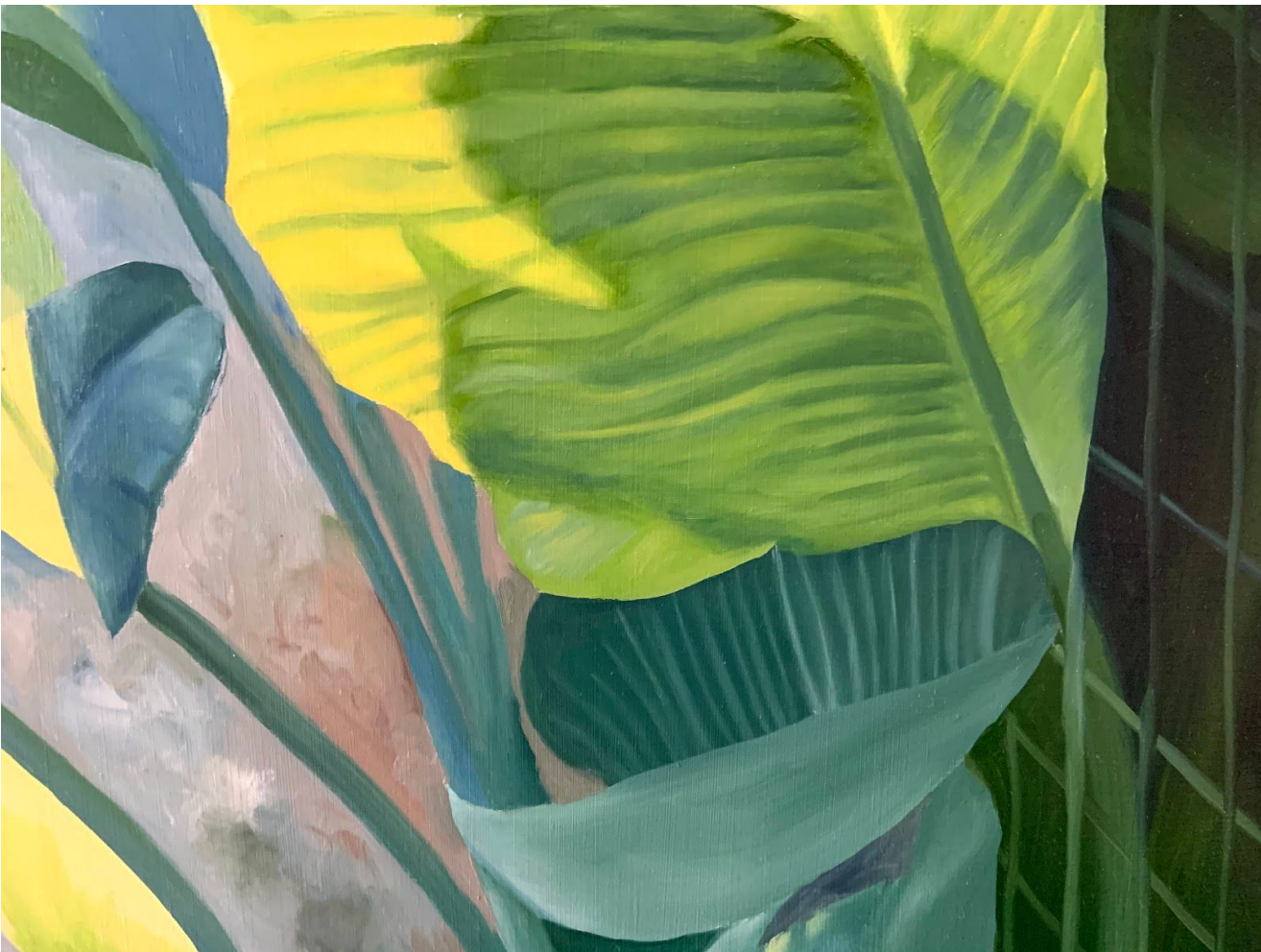


Campus Lagoon, Oil Paint on Panel, 16" x 20"





Madrid Road, Acrylic and Oil Paint on Panel, 20" x 16"





7:52, Oil Paint on Panel, 24" x 36"

