

Sophie Arango Nebeker

I am an interdisciplinary artist who is curious about the structure and formation of patterns embedded in natural forms, such as the branching patterns of arborescence as seen in corals, trees, or river deltas. I create sculptures as meditations on shape and form, and investigate the functional intentions of the organic system from a biological perspective.

I use cast bronze to mimic these expanding patterns, to hold onto their intricate and ephemeral structures. I want to share the physical weight of the thing in hopes that the viewer will look closer at the details to create a new relationship with the phenomena.

Recently I investigated coral morphology to reinterpret human connection to our oceans. I utilized 3D printers and high magnification microscopes to collect patterns and shapes, ultimately to create sculptural objects to be held in the palm of a hand. Through this multi-modal approach, I share the wonder and beauty intrinsic to natural systems.



Where did this start  
When does it end?  
(2018)  
Cast Bronze  
7"x7"x5"







Where did this start  
When does it end?  
(2018)  
Cast Bronze  
Photograph by Troy  
Small



Where did this start  
When does it end?  
(2018)  
Cast Bronze  
1'5"x1'5"x3"





Generations  
(2018)  
PLA filament,  
Handsanzitzier  
7"x7"x7"





Lives of Leaves Left  
(2019)  
Paper Collage on  
panel  
4'x6'







All Caught Up  
(2019)  
Cast Bronze  
7"x7"x7"





Coral Being  
(2019)  
Cast Bronze  
5"x4"x3"





Bahamas Boa  
*Chilabothrus strigilatus*



Abaco Boa  
*Chilabothrus exsul*



## BOAS OF THE BAHAMAS

Southern Bahamas Boa  
*Chilabothrus chrysogaster*



Crooked-Acklins Boa  
*Chilabothrus schwartzi*



Silver Boa  
*Chilabothrus argentum*



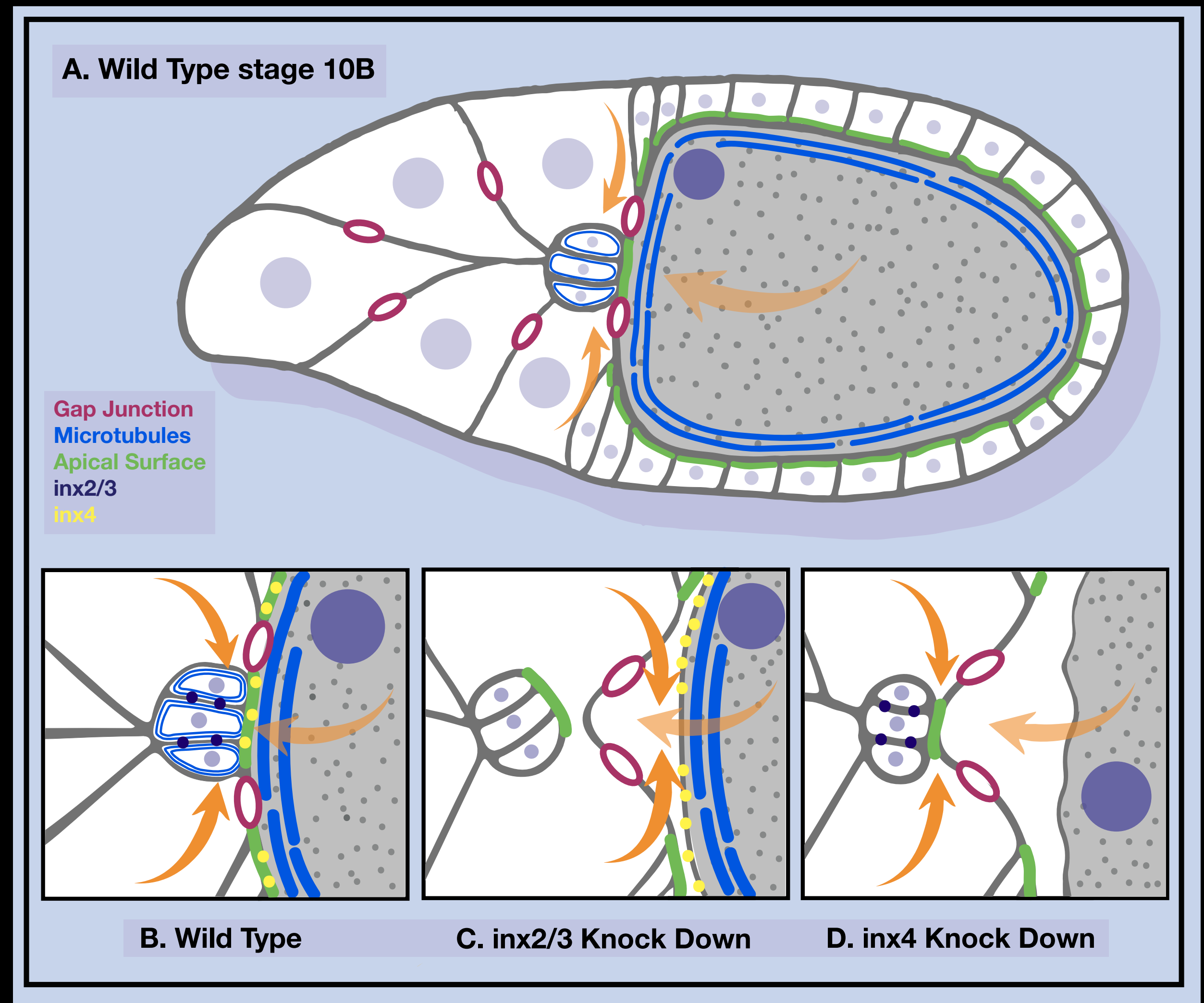
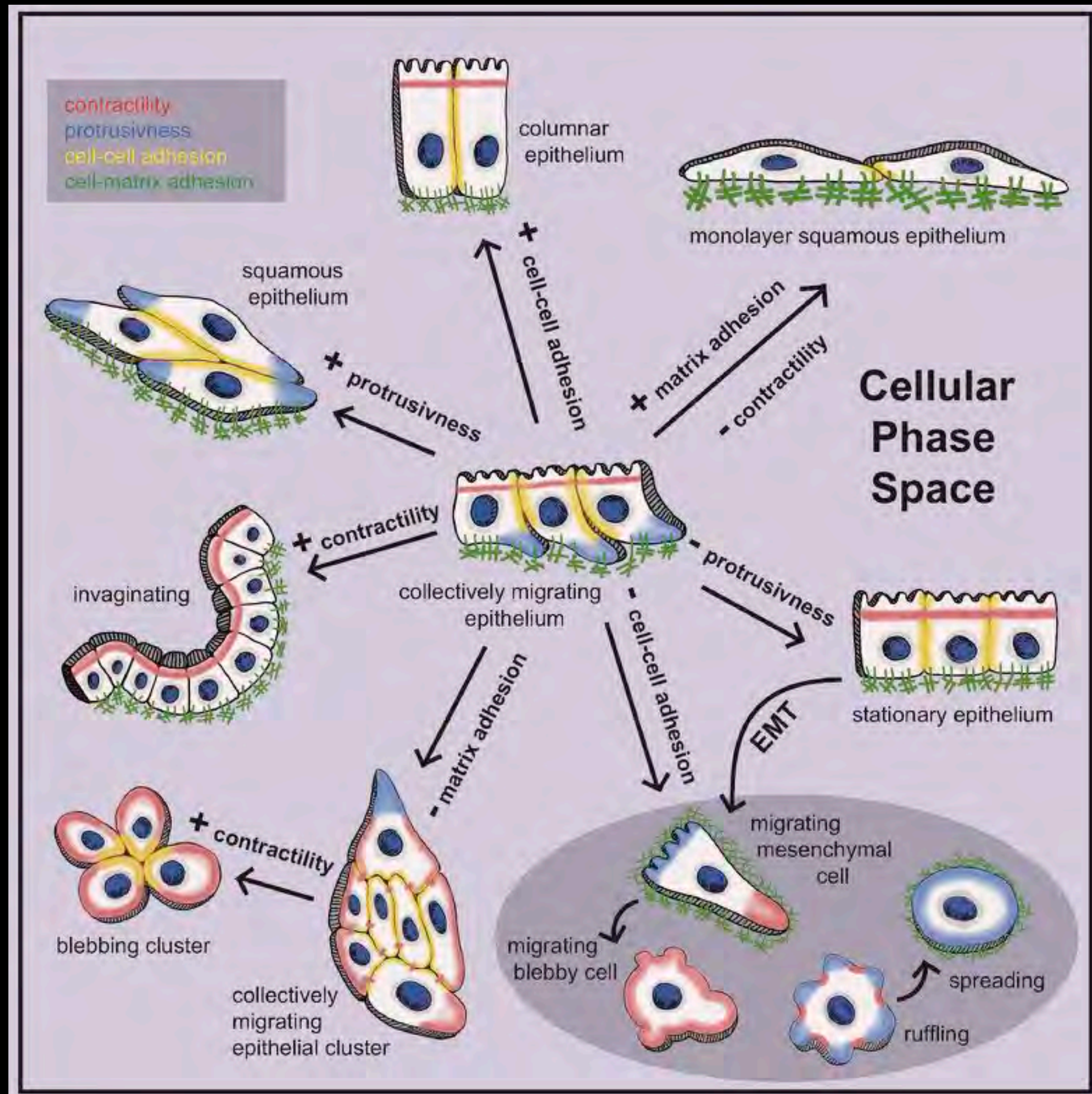
SOPHIE ARANGO  
MEBEKER 2019

Bahamas Boa  
*Chilabothrus strigilatus*



Boas of the Bahamas  
(2019)  
Watercolor and Digital





Figures commissioned by Dr. Denise Montell  
(2019, 2020)  
Digital





Lichen  
(2020)  
Photograph





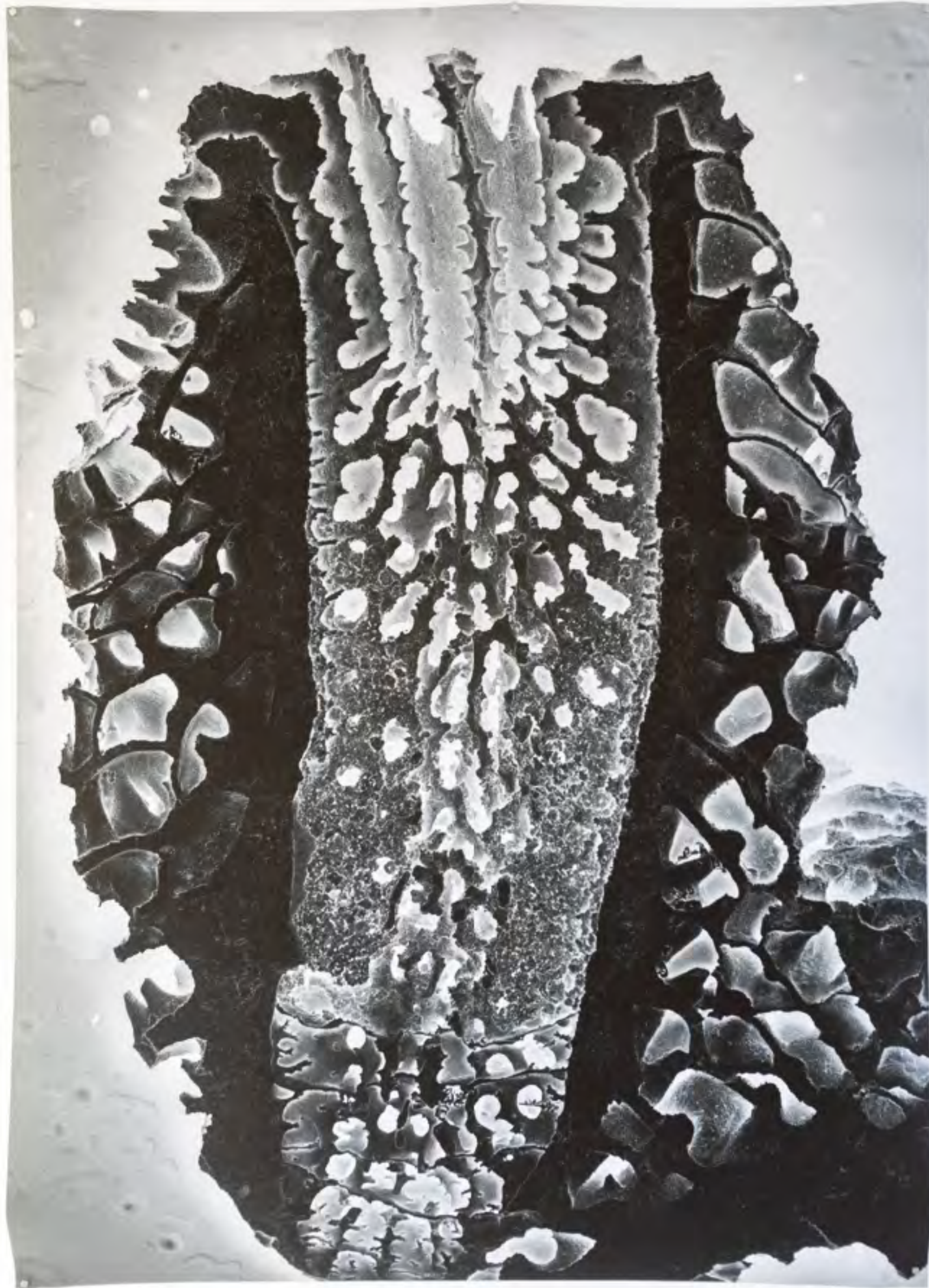
Coral 3D Model  
(2020)  
Viewed in the  
Allosphere



Acropora  
(2020)  
B&W Print  
5'4"x4'







Expansive  
Landscape  
(2020)  
B&W Print  
4'x6'

Crystal Cavern  
(2020)  
Color Print  
2'x3'







Take a Seat  
(2020)  
3D print  
3"x3"x3"

